

National curriculum tests

Key Stage 1

Mathematics

Practice Paper 2: reasoning

Time: about 35 minutes
No calculator allowed
35 marks

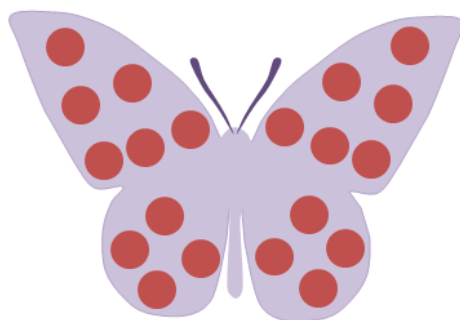
First name	
Middle name	
Last name	



Total marks

--

Practice Question



spots

1

4	4	4	4
4	4	4	4
4	4	4	4



1 mark

Ref: 2C1


2



1 mark

Ref: 2C1

3



1 mark

Ref: 2C1

4

40 10



1 mark

Ref: 2C1

5

42

51



1 mark

Ref: 2C1

6

How many full glasses can be made using these amounts



glasses



1 mark

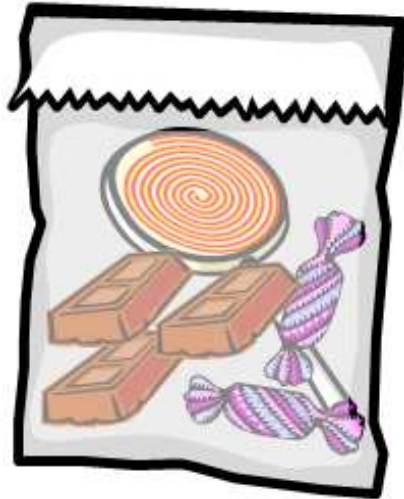
Ref: 2F1b

7

A shop sells these sweets.



Poppy bought some sweets and put them in a bag



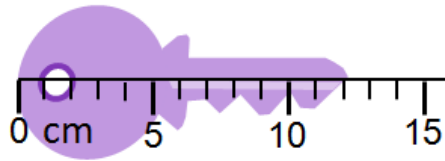
How much did Poppy pay for her sweets?



1 mark

Ref: 2M9

8 How long is the key.

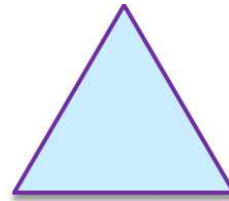
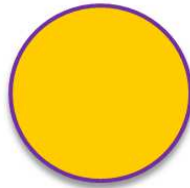
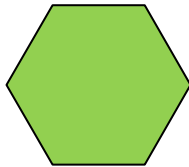
 cm

Ref: 2M2



1 mark

9 Draw lines to match the shape to their names



Circle

Square

Triangle

Hexagon

Ref: 1G1a



1 mark

10 Complete the table

words	digits
twenty one	21
forty seven	
	67

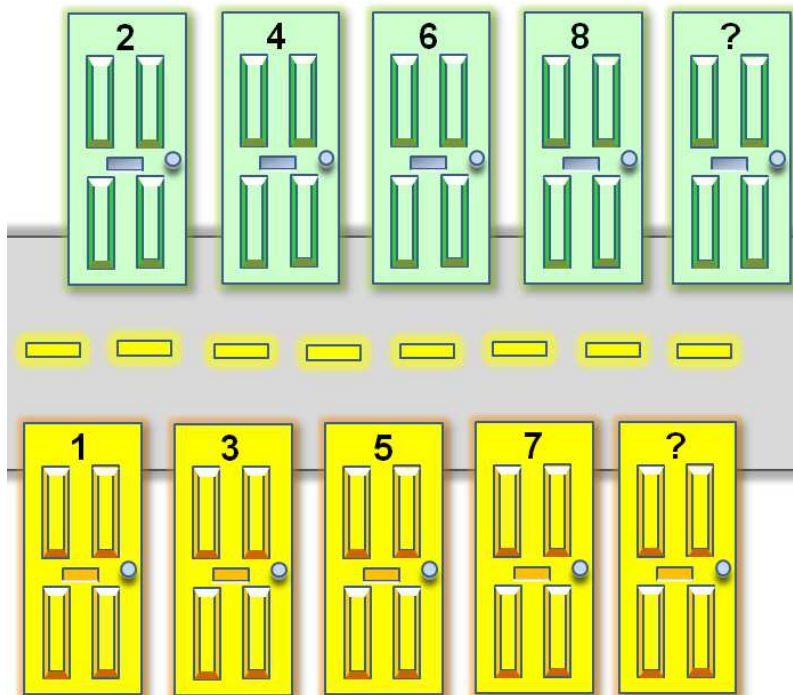


1 mark

Ref: 2N2a

11

These are house doors numbers in a street.



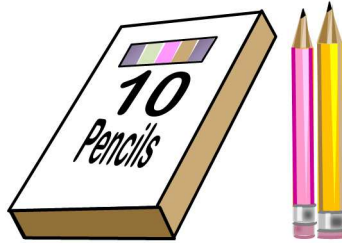
What door numbers are missing?



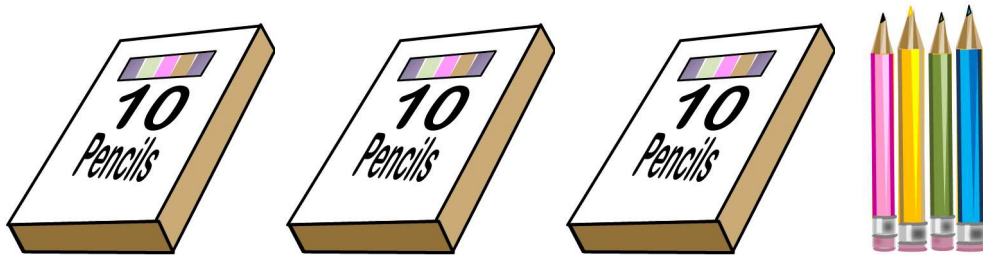
1 mark

Ref: 2N1

12 Poppy had 12 coloured pencils



Henry had this many coloured pencils



How many coloured pencils does Henry have



1 mark

Ref: 2N6

13 Write two numbers to make this calculation correct.

$$\square - \square = 21$$

Now write three numbers to make this calculation correct.

$$\square - \square - \square = 21$$

Ref: 2C3

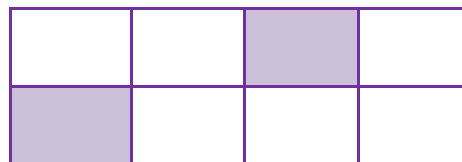


1 mark



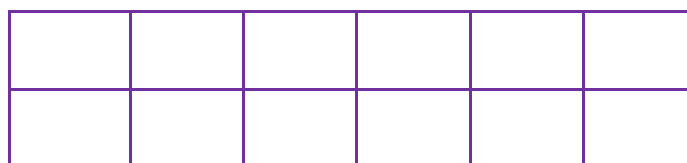
1 mark

14 What fraction of this shape is shaded



$$\frac{1}{\square}$$

Shade $\frac{1}{3}$ of this shape



Ref: 2F1a

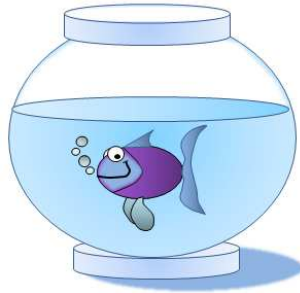


1 mark



1 mark

15 Poppy wants to buy a fish for £5.



She has saved this amount of money



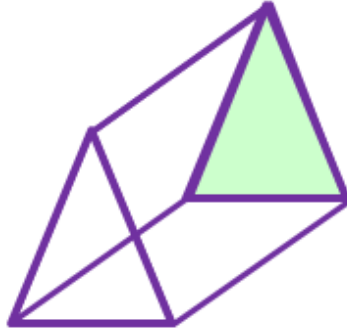
How much *more* money does she need to buy the fish



1 mark

Ref: 2M3a/2M3b

16 How many rectangles does this shape have?



rectangles

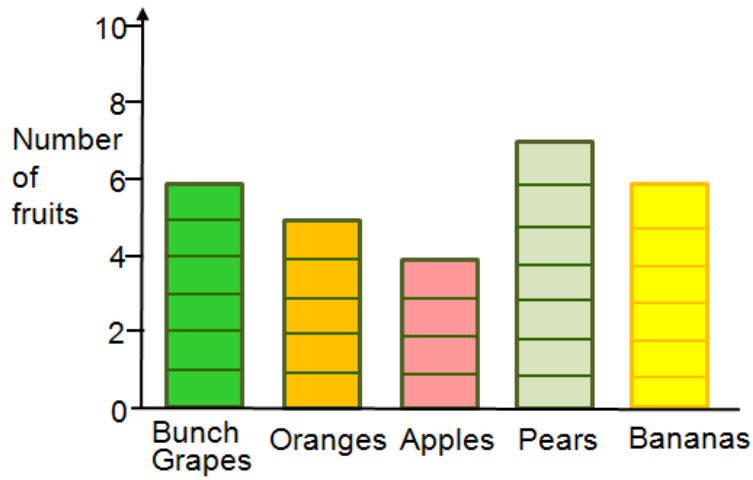


1 mark

Ref: 2G3

17

This diagram shows the number of fruits in a bowl



a) How many oranges and pears are there altogether?

fruits



1 mark

b) There are more bananas than apples.
How many more?

fruits



1 mark

Ref: 2S1/2S2b

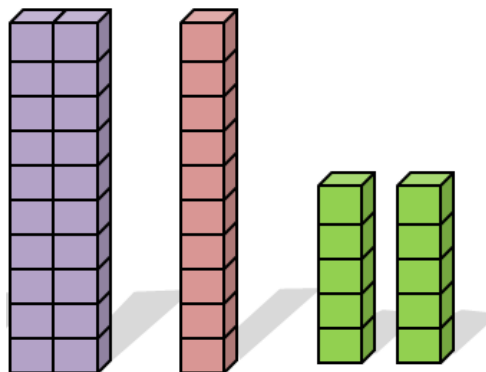
18 What number does the arrow point to



1 mark

Ref: 2N4

19 Henry had some blocks.



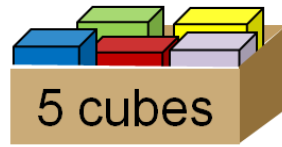
Poppy wanted the same number of blocks
How many do they have altogether?



1 mark

Ref: 2C4/2C8

20 There are 5 coloured cubes in a tray.
Henry has 5 trays of cubes.



Henry gave Poppy two cubes.
How many cubes will Henry have left altogether?

Show
your
working

cubes

2 marks

Ref: 2C8

21 Sort the shapes by writing their number in the two boxes



Is symmetrical

Is **not** symmetrical



1 mark

Ref: 1G1a

22 Write a number in the box to make the subtraction correct.

$$\boxed{} - 19 = 25$$



1 mark

Ref: 2C3

23

Write a digit in each box to make the sum correct.

$$\begin{array}{|c|} \hline 5 \\ \hline \end{array} \begin{array}{|c|} \hline \\ \hline \end{array} + \begin{array}{|c|} \hline \\ \hline \end{array} = \begin{array}{|c|} \hline 6 \\ \hline \end{array} \begin{array}{|c|} \hline 7 \\ \hline \end{array}$$

Ref: 2C4



1 mark

24

Poppy's mum made 30 cakes for her birthday.

Poppy shared the cakes between 10 people

Which (✓) calculation shows how many cakes each person got.



$30 + 10 = 40$

$30 - 10 = 20$

$30 \div 10 = 3$

$30 \times 10 = 300$

Ref: 2C8



1 mark

25

There are 40 marbles in a tray.

There are five rows of marbles.



How many marbles are in each row?

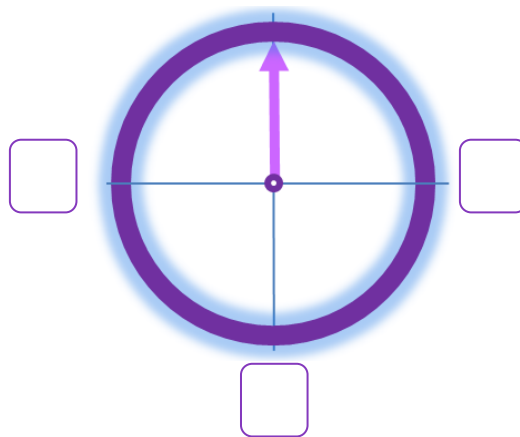


1 mark

Ref: 2C6

26

Where is the pointer after an anti clockwise three-quarter turn (✓)



1 mark

Ref: 2P2

27

There are 40 marbles in a tray.

Henry takes 13 marbles.

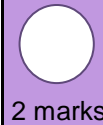
Poppy takes 15 marbles.



How many marbles are left?

Show
your
working

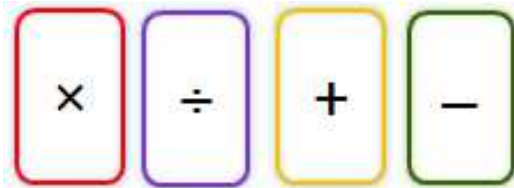
marbles



2 marks

Ref: 2C4

28 Look at these signs



Write the correct sign in each box.

$$10 \quad \square \quad 2 \quad = \quad 1 \quad \square \quad 5$$



1 mark

Ref: 2C7

29 Look at these weights



Write the correct sign $<$ or $>$ or $=$ in each box

$$20\text{g} \quad \square \quad 50\text{g}$$

$$100\text{g} \quad \square \quad 50\text{g} + 50\text{g}$$

$$50\text{g} \quad \square \quad 10\text{g} + 20\text{g}$$

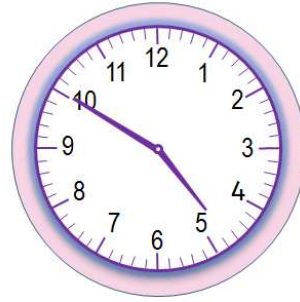
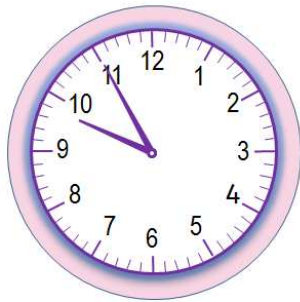
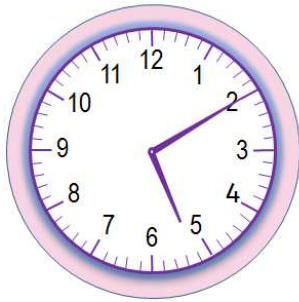


1 mark

Ref: 2M1

30

Tick (✓) the clock that shows **ten to five**



1 mark

Ref: 2M4a

End of Test