

AQA, OCR, Edexcel

GCSE Science

GCSE Biology

Principle of Organisation
Answers

Name:

M M E

Mathsmadeeasy.co.uk

Total Marks: /19

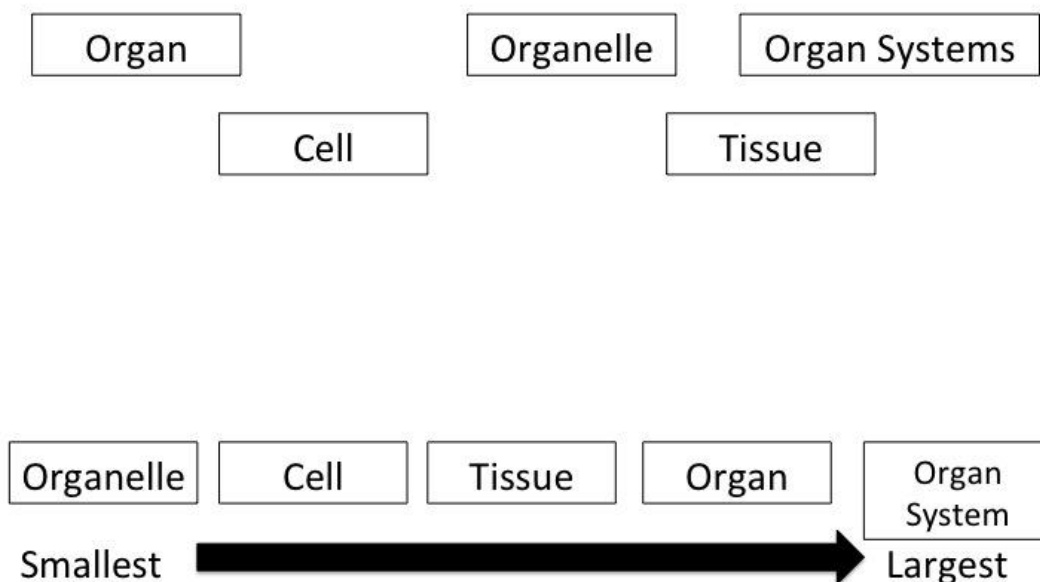
Visit <http://www.mathsmadeeasy.co.uk/> for more fantastic resources.

Q1: Cells are the building blocks of organisms. What organism structure is made up of multiple cells of a similar function?

A= Tissues

(1 mark)

Q2: Using the following labels assemble the structures in size order.



A= 1 mark for 3/5 in order. 2 marks for all 5 in order

(2 marks)

Q3: Give 2 examples of a human organ.

A= 1 mark for any 2 of the following:

- Liver
- Skin
- Lung
- Heart
- Brain
- Kidney
- Stomach
- Bladder
- Uterus

Visit <http://www.mathsmadeeasy.co.uk/> for more fantastic resources.

(2 marks)

Q4: Give a definition of an organ.

A= Multiple Tissues with specific function

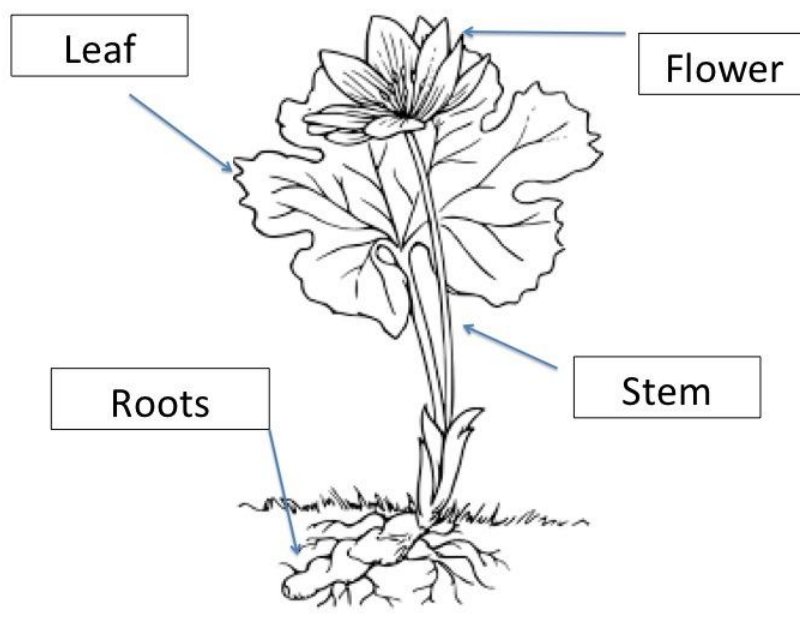
(2 marks)

Q5: Give 2 examples of an organ system.

A= Any 2 of the following:

- Digestive
- Nervous
- Circulatory
- Renal
- Reproductive

Q6: i) Draw and label the main organs in a plant.



A= 1 mark for each label.

Can also accept: seed/ fruit

(4 marks)

Visit <http://www.mathsmadeeasy.co.uk/> for more fantastic resources.

ii) Discuss the main function of the plant organs above

A= 1 mark per each correct point.

- Leaf – Photosynthesis
- Roots- Take up water
- Stem- Holds up plant/ water transport
- Flower- Reproduce/ seeds
- Fruit- energy store

(4 marks)

Q7: Describe what an organ system is.

A= 1 mark for each point.

- Group of organs
- Perform one or more functions

(2 marks)