

AQA, OCR, Edexcel

GCSE Science

GCSE Biology

Coronary Heart Disease
Answers

Name:

M M E

Mathsmadeeasy.co.uk

Total Marks: /22

Q1: Explain what coronary heart disease is.

A= Fatty build up within the arteries

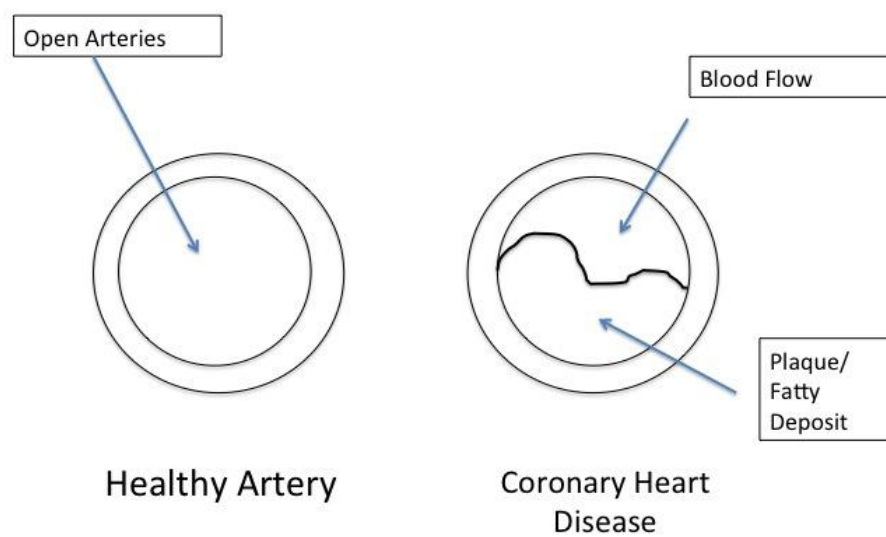
(1 mark)

Q2: What happens to the arteries of a patient with coronary heart disease?

A= Narrows arteries

(1 mark)

Q3: Using the space below complete a diagram to show a healthy artery and an artery of a coronary heart disease patient.



A= 1 mark for correct labelling of blood flow

1 mark for plaque label

(4 marks)

Visit <http://www.mathsmadeeasy.co.uk/> for more fantastic resources.

Q4: Give 2 possible reasons for coronary heart disease.

A= award 2 marks for any 2 of the following:

- Poor diet
- Increase blood pressure
- Smoking
- Stress
- Genetics
- High Cholesterol

(2 marks)

Q5: Give 2 methods of how early coronary heart disease can be treated and how they work.

A= Award 2 marks for correct method and 2 marks for correct function.

- Stents – Keep arteries open
- Statins- Lower cholesterol to slow rate of build up

(4 marks)

Q6: Give 2 surgical methods to treat severe cases of coronary heart disease.

1:Valve replacement

2:Heart transplant

A= 1 mark for each method

(2 marks)

Visit <http://www.mathsmadeeasy.co.uk/> for more fantastic resources.

Q7: The NHS has ever increasing costs. Evaluate methods the NHS could use to reduce the costs associated with treating coronary heart disease.

A= 3 marks awarded for the methods. 3 marks awarded for how

Education

- Healthy eating
- Low cost
- High number of patients targeted

Diet Programs

- Decrease at risk groups
- Low cost
- High number of patients targeted

Stop smoking programs

- Decrease at risk groups
- Low cost
- High number of patients targeted

Statins

- Use early
- Reduce number of severe cases
- High cost

(6 marks)

Q8: Give 2 symptoms of coronary heart disease.

1: Chest pain/ Angina

2: Breathlessness/ Shortness of breath

(2 marks)