

Sin, Cos and Tan Graphs

Please write clearly in block capitals

Forename:

Surname:

Materials

For this paper you must have:

- mathematical instruments



You **can** use a calculator.

Instructions

- Use black ink or black ball-point pen. Draw diagrams in pencil.
- Fill in the boxes at the top of this page.
- Answer all questions.
- You must answer the questions in the spaces provided. Do not write outside the box around each page or on blank pages.
- Do all rough work in this book. Cross through any work you do not want to be marked.

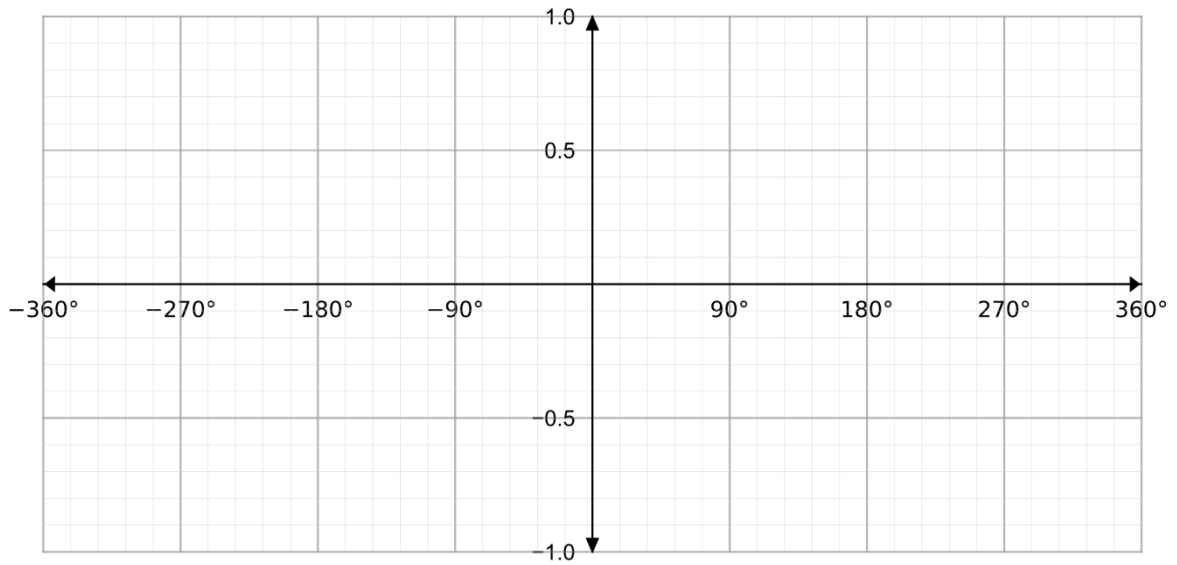
Information

- The marks for questions are shown in brackets.
- You may ask for graph paper, tracing paper and more answer paper. These must be tagged securely to this answer book.

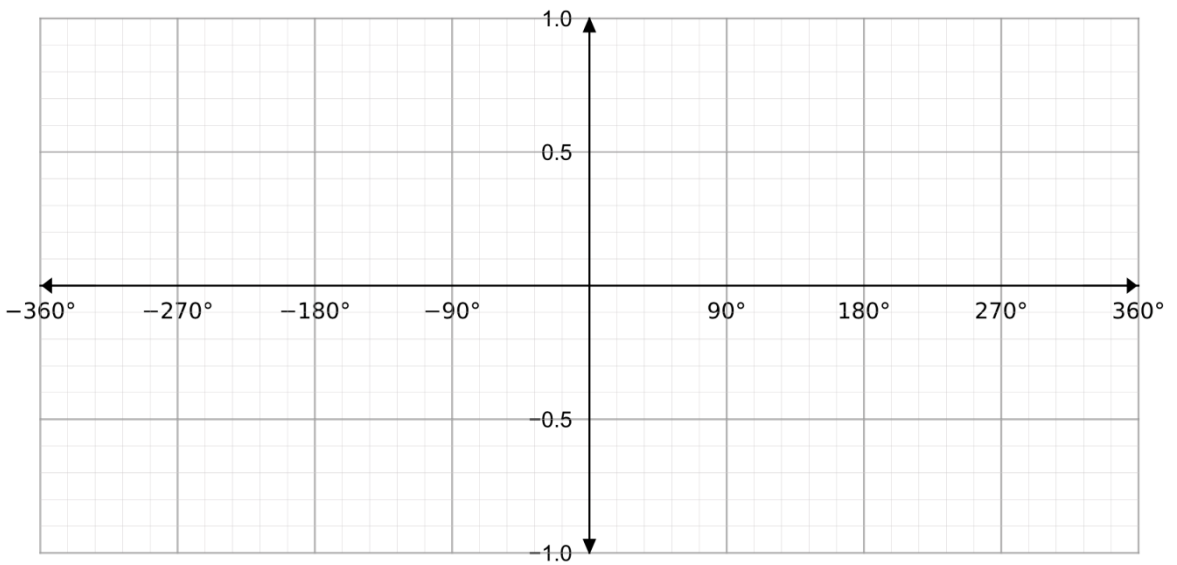
Advice

- In all calculations, show clearly how you work out your answer.

- 1 Sketch the graph of $y = \sin(x)$ on the axes below for the region $-360 \leq x \leq 360$. (Level 5)
[2 marks]



- 2 Sketch the graph of $y = \cos(x)$ on the axes below for the region $-360 \leq x \leq 360$. (Level 5)
[2 marks]

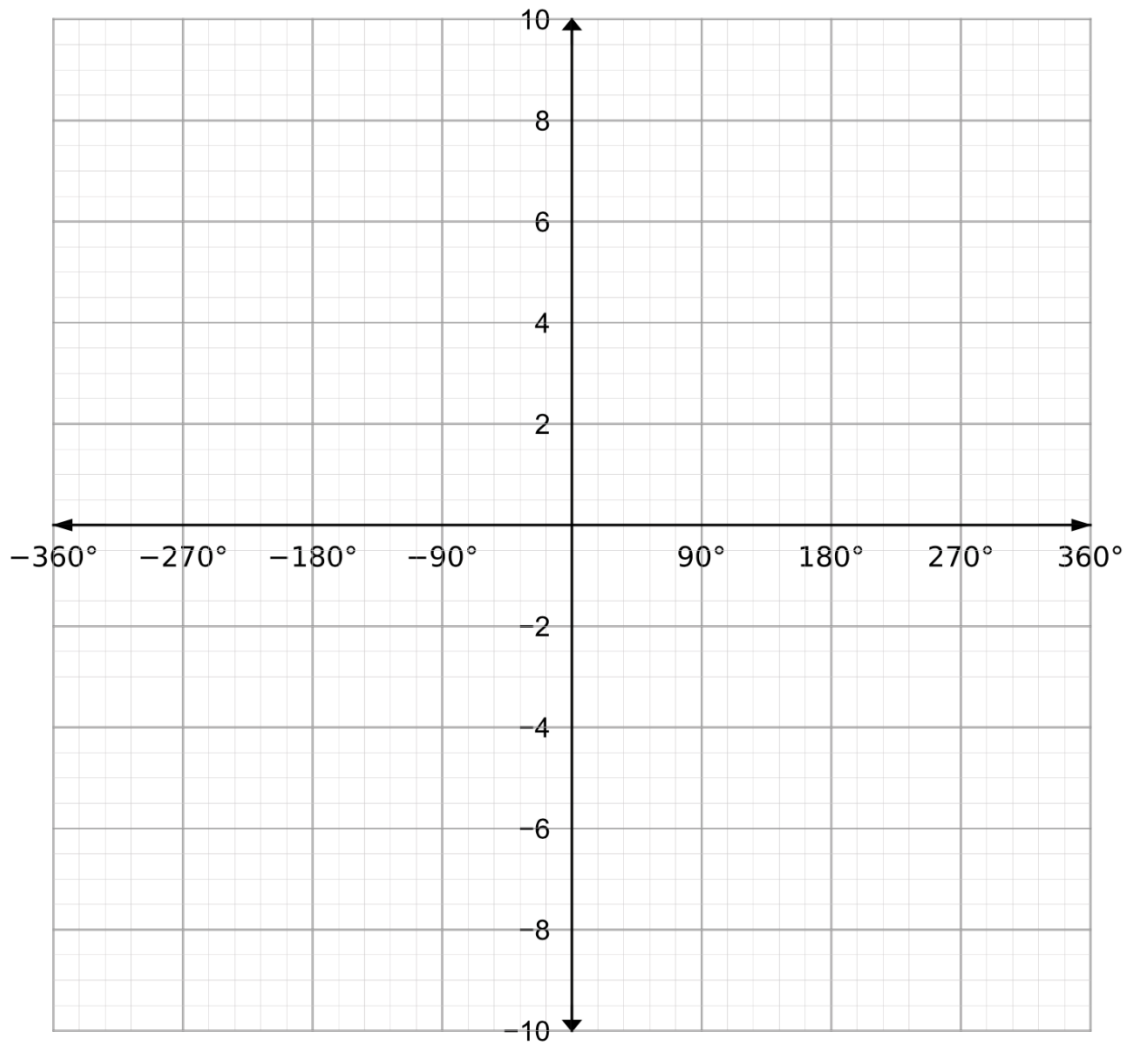


Turn over for next question

Turn over ►

3 Sketch the graph of $y = \tan(x)$ on the axes below for the domain $-360 \leq x \leq 360$ (Level 5)

[2 marks]



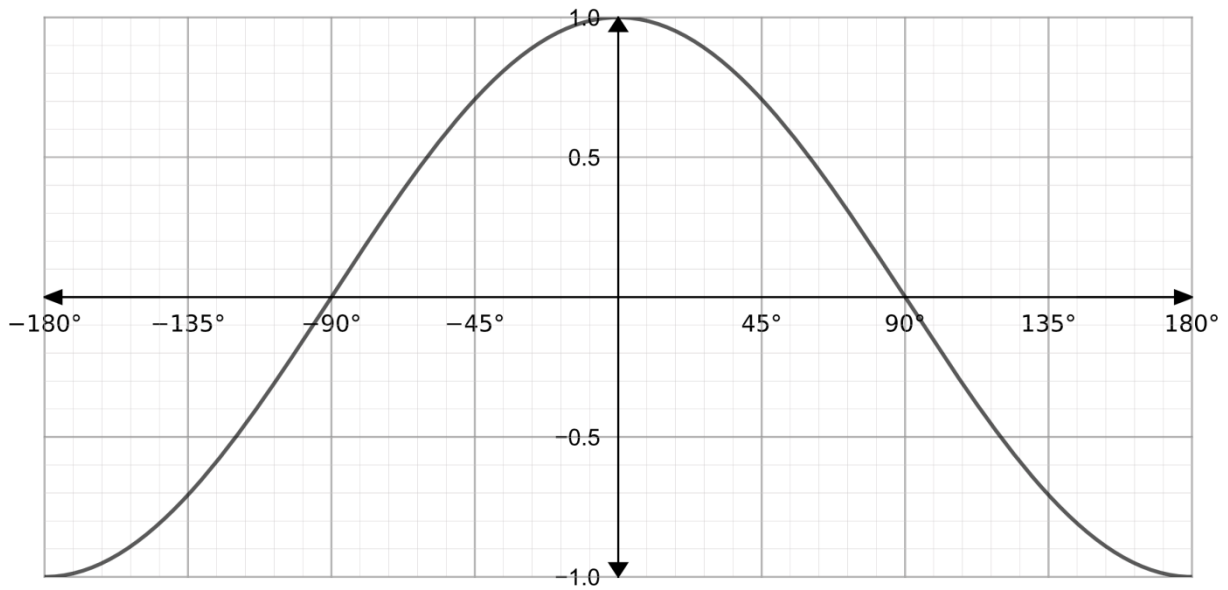
GCSE Maths Revision Cards

- ✓ All major GCSE maths topics covered
- ✓ Higher and foundation
- ✓ All exam boards - AQA, OCR, Edexcel, WJEC

Get them at mme.la/cards or scan the barcode



- 4 The graph of $y = \cos(x)$ for $-180 \leq x \leq 180$ has been drawn on the axes below. (Level 6)



Using the graph, find the solutions to the following equations.

4(a)

$$\cos(x) = 0$$

[1 mark]

Answer

4(b)

$$\cos(x) = \frac{1}{2}$$

[1 mark]

Answer

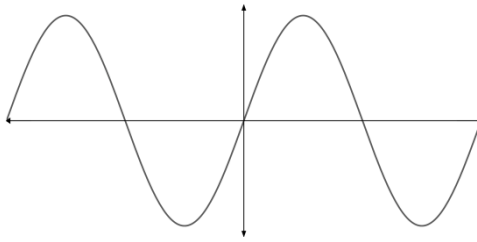
4(c)

Explain why there are no solutions to the equation $\cos(x) = 2$.

[1 mark]

5 For the following graphs, circle the correct function corresponding to the graph shown. (Level 6)

5(a)



[1 mark]

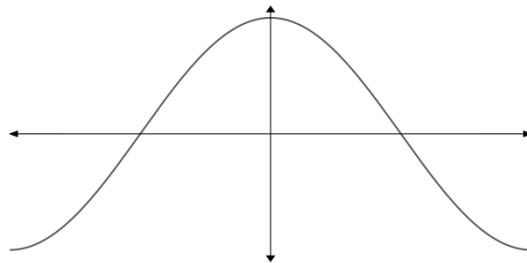
cosine

tangent

Sine

none of the above

5(b)



[1 mark]

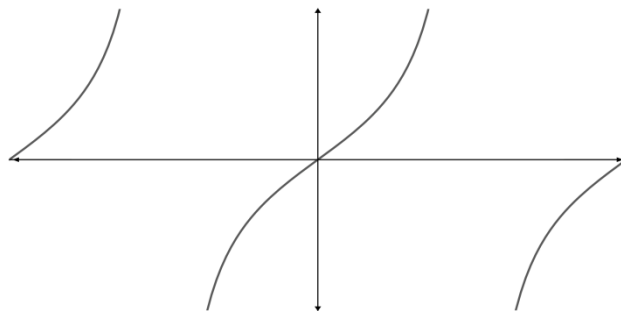
cosine

tangent

Sine

none of the above

5(c)



[1 mark]

cosine

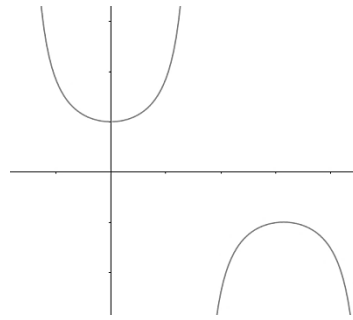
tangent

Sine

none of the above

Turn over for next question

5(d)



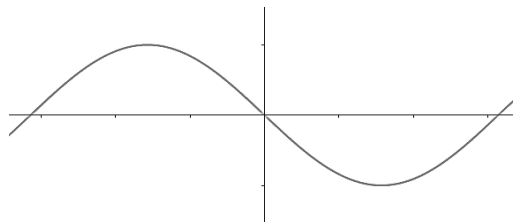
[1 mark]

*cosine**tangent*

Sine

none of the above

5(e)



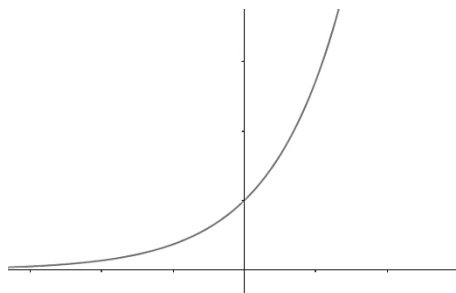
[1 mark]

*cosine**tangent*

Sine

none of the above

5(f)



[1 mark]

*cosine**tangent*

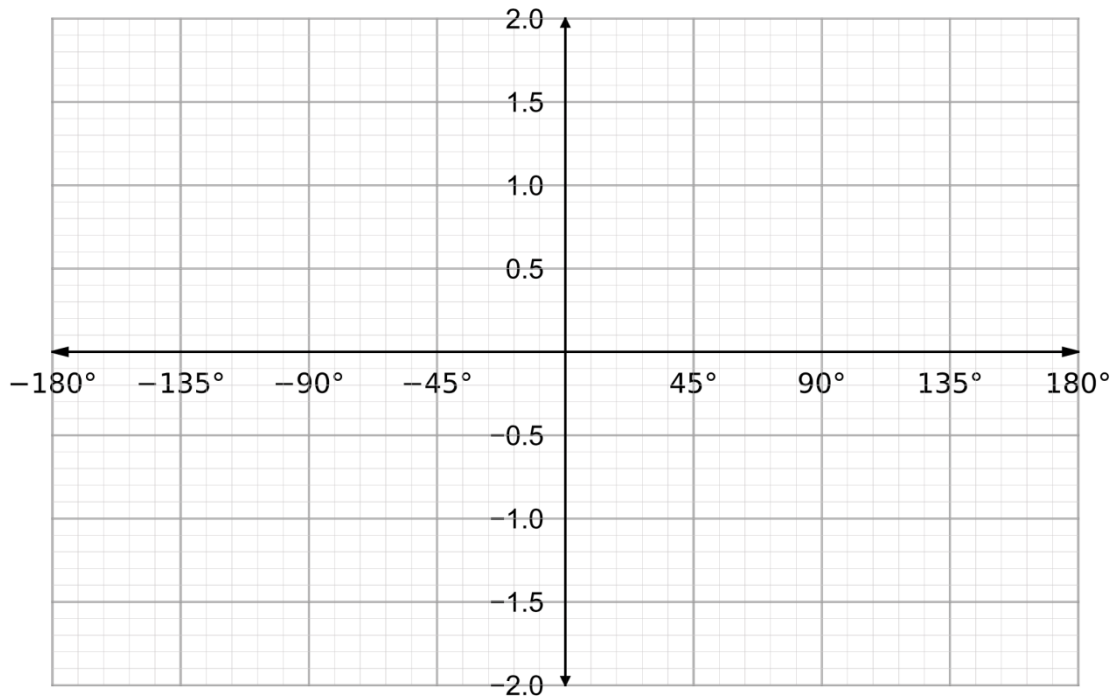
Sine

none of the above

6

Sketch the graphs of $y = \sin(x)$ and $y = 2\sin(x)$ for $-180 \leq x \leq 180$ on the axes below, making sure to label any points of intersection with the axes.

(Level 7)

[3 marks]

GCSE Maths Practice Exam Papers

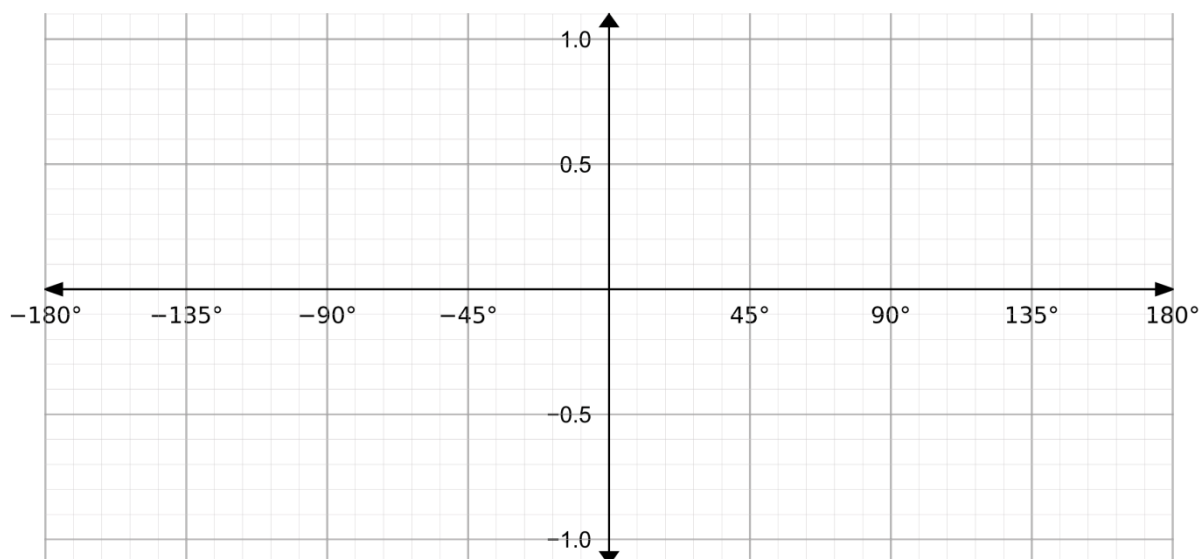
- ✓ GCSE Maths predicted papers and mark schemes
- ✓ Paper 1, 2, 3 and mark scheme in every set
- ✓ All exam boards - AQA, OCR, Edexcel, WJEC

Get them at mme.la/papers or scan the barcode



- 7 By use of a sketch, find any solutions to the equation $\sin(x) = \cos(x)$ for $-180 \leq x \leq 180$.

(Level 7)

[3 marks]



GCSE Maths Revision Guide

- ✓ GCSE Maths Course 9-1 Revision Guide
- ✓ Exam Questions Included
- ✓ All exam boards - AQA, OCR, Edexcel, WJEC
- ✓ Suitable for higher and foundation tiers

Get it at mme.la/guide or scan the barcode

